



Commitment of Quality

EARTHING

ACCESSORIES

PERFECTION IN EVERY DETAIL



INDEX

EARTHING ACCESSORIES

ARRESTOR BASE WITH ROD	28
EARTH ROD CLAMPS	28
COPPER BONDED EARTH ROD	28
SOLID COPPER EARTH ROD	28
BRASS COUPLINGS/BRASS SOCKETS	29
STEEL DRIVING STUD	29
SQUARE TEST CLAMPS	29
ROUND TEST CLAMPS (TEST BOND)	29
TAPE CLIPS (SADDLES)	29
D C TAPE CLIPS	30
BRASS SPLIT BOLT CONNECTORS	30
BRASS ROD TO CABLE CLAMP	30
BRASS TAPE TO RAD CABLE CLAMP	30
BRASS TEST JUNCTION CLAMP	30
TOWER EARTH CLAMPS	31
TAPER POINTED AIR RODS	31
AIR ROD RIDGE SADDLES	31
PLATE TYPE TEST CLAMP	32
SCREW DOWN TEST CLAMP	32
METALLIC CONDUCTOR CLIPS	32
ADJUSTABLE EARTH CLAMPS	33
RADIATOR EARTH CLAMPS	33
EARTH BLOCK	33

HEAVY DUTY ACCESSORIES

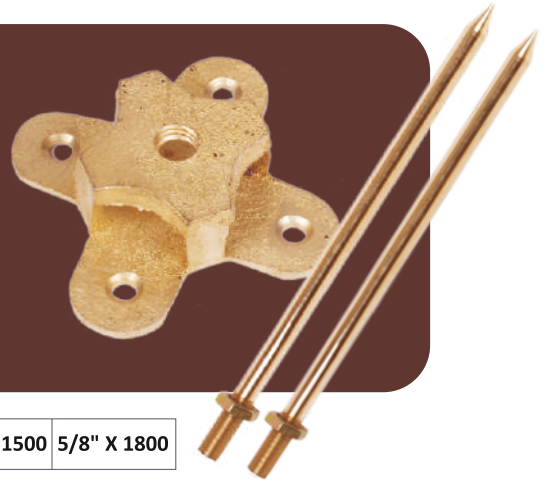
B BOND	34
CROSS SADDLE	34
U BOLT CLAMP WITH DOUBLE PLATE (GU V TYPE)	34
U BOLT - ROD CLAMP (E TYPE)	34
OBLONG TEST CLAMP	34
CABLE EARTH CLAMP	34



ARRESTOR BASE WITH ROD

BRASS EARTH ROD FORM AN IMPORTANT PART OF THE AIR TERMINATION NETWORK OF A LIGHTNING PROTECTION SYSTEM. ALL OF OUR EARTH RODS ARE SUPPLIED WITH A LOCKNUT ENABLING THE ROD TO BE LOCKED TIGHT AGAINST THE CONDUCTOR.

EARTH RODE BASE ARE USED TO SUPPORT EARTH RODS ON FLAT ROOF SURFACES.



LENGTH	5/8" x 300	5/8" X 500	5/8" X 600	5/8" X 1000	5/8" X 1200	5/8" X 1500	5/8" X 1800
--------	------------	------------	------------	-------------	-------------	-------------	-------------

ROD SIZE: 12" , 18" , 24" , 30" , 36"

THREAD SIZE: 3/8" , 7/16" , 1/2" , 5/8"



EARTH ROD CLAMPS

- ROD TO TAPE CLAMP : (A CLAMP)
- ROD TO CABLE CLAMP : (B CLAMP)
- ROD TO CONDUCTOR CLAMP : (G CLAMP)

Conductor Size From 10mm² To 120mm²

Special clamps as per customer's specification can be manufactured and in gun metal also.

COPPER BONDED EARTH ROD



SIZE	TYPE	LENGTH	FINISH
3/8"	NON-THREADED	1200mm to 3000mm	COPPER BONDED
5/8"	THREADED OR NON-THREADED	1200mm to 3000mm	
3/4"	THREADED OR NON-THREADED	1200mm to 3000mm	

SOLID COPPER EARTH ROD



SIZE	TYPE	LENGTH	FINISH
3/8"	NON-THREADED	1200mm to 1500mm	99.9% PURE ELECTROLYTIC COPPER
5/8"	THREADED OR NON-THREADED	1200mm to 1500mm	
3/4"	THREADED OR NON-THREADED	1200mm to 1500mm	



BRASS COUPLINGS/BRASS SOCKETS

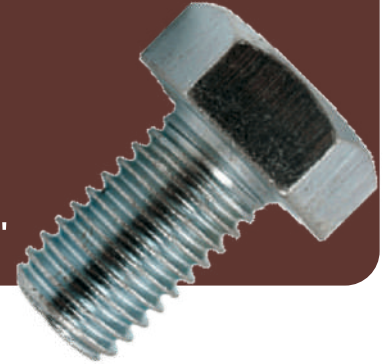


Metric & Inches	Type
14mm x 50mm	Round
5/8" x 50mm	Round & Hexagonal
3/4" x 50mm	Round & Hexagonal
5/8" x 70mm	Round & Hexagonal
3/4" x 70mm	Round & Hexagonal
5/8" x 80mm	Round & Hexagonal
3/4" x 80mm	Round & Hexagonal

STEEL DRIVING STUD

SIZE: 5/8"
PLATING: BLUE ZINC

Size : 3/8", 5/8"



SQUARE TEST CLAMPS

THESE RUPAM BRAND FOUR-WAY CONNECTORS ARE SUITABLE FOR MAKING CROSS, STRAIGHT THROUGH OR TEE JOINTS IN FLAT TAPE. THE BASE HAS A COUNTERSUNK HOLE IN THE MIDDLE FOR SECURING THE CLAMP TO THE BUILDING SURFACE.

MATERIAL:
HIGH COPPER ALLOY &
ALUMINIUM

CONDUCTOR SIZE MM
25mm X 3mm
50mm X 6mm

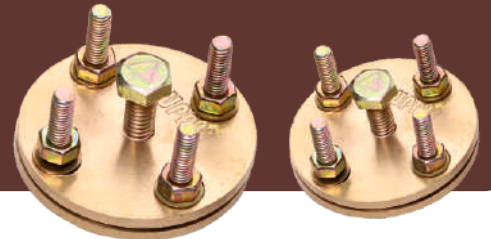


ROUND TEST CLAMPS (TEST BOND)

THIS RUPAM BRAND CLAMP IS USED TO FORM A DISCONNECTING JOINT BETWEEN THE DOWN CONDUCTOR AND EARTHING SYSTEM.

MATERIAL:
HIGH COPPER ALLOY &
ALUMINIUM

MAXIMUM CONDUCTOR SIZE
MM
26MM X 15MM



TAPE CLIPS (SADDLES)

RUPAM TAPE CLIPS HOLD FLAT TAPE CONDUCTOR FLUSH TO THE BUILDING SURFACE.

MATERIAL:
HIGH COPPER ALLOY &
ALUMINIUM

CONDUCTOR SIZE MM
20mm X 3mm
1" X 1/8"





DC TAPE CLIPS

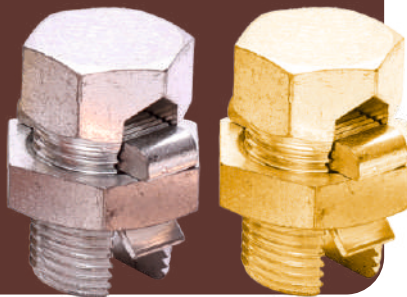
BRASS DC CLIPS SECURE THE FLAT TAPE CONDUCTOR TO THE BUILDING SURFACE.

CONDUCTOR SIZE MM

- 25mm X 3mm
- 25mm X 6mm
- 50mm x 3mm
- 50mm x 6mm



BRASS SPLIT BOLT CONNECTORS



Main Conductor A mm ²	Tap Conductor B mm ²	Plating
10	1.5-10	BRASS / COPPER / TIN
16	2.5-16	BRASS / COPPER / TIN
25	2.5-25	BRASS / COPPER / TIN
35	2.5-35	BRASS / COPPER / TIN
50	2.5-50	BRASS / COPPER / TIN
70	2.5-70	BRASS / COPPER / TIN
95	2.5-95	BRASS / COPPER / TIN
120	10-120	BRASS / COPPER / TIN
150	10-150	BRASS / COPPER / TIN
185	50-185	BRASS / COPPER / TIN
240	95-240	BRASS / COPPER / TIN

BRASS CLAMPS FOR LIGHTING ACCESSORIES

BASS ROD TO CABLE CLAMP

SIZE:
ROD DIA
5/8" OR 3/4"

WIRE TO CONDUCTOR
16MM² - 240MM²



BASS TAPE TO ROD CABLE CLAMP

SIZE:
ROD DIA
5/8" OR 3/4"

TAPE CONDUCTOR
25MM X 3MM



BASS TEST JUNCTION CLAMP

SIZE:
ROD DIA
5/8" OR 3/4"

TAPE CONDUCTOR
25MM X 3MM



NOTE:

Above products are available as per customer's specification & can be manufactured from Gun Metal, Aluminium, Phosphorous Bronze etc.

TOWER EARTH CLAMPS

TOWER EARTH CLAMPS ARE USED FOR BONDING COPPER CONDUCTORS ONTO STEEL SURFACES. THE DOUBLE-PLATE DESIGN PROVIDES A ROBUST FIXING IN AREAS WHERE CLADDING MAY BE INSTALLED OR WHERE THE COMPLETE CLAMP WILL BE COVERED BY CONCRETE. THE CLAMP IS FIXED BY DRILLING A HOLE IN THE STEELWORK AND SECURING WITH THE SET SCREW PROVIDED.

MATERIAL : COPPER ALLOY



Conductor Range sqmm	Set Screw
16-70	M10 x 50mm
70-120	M12 x 60mm
120-185	M12 x 75mm
185-240	M12 x 80mm
240-300	M12 x 90mm

TAPER POINTED AIR RODS

THE MULTI-POINT IS USED IN CONJUNCTION WITH THE TAPER POINTED COPPER AIR RODS.

MATERIAL : COPPER ALLOY BASE WITH COPPER SPIKES

Air Rod 16 -70 Ø (mm)



AIR ROD RIDGE SADDLES

THE AIR ROD RIDGE SADDLES ARE USED TO SUPPORT AIR RODS ON ROOF RIDGES.

MATERIAL : COPPER ALLOY

FOR USE WITH	THREAD SIZE	L (mm)	H (mm)
Copper Air Rods	M16	137	34

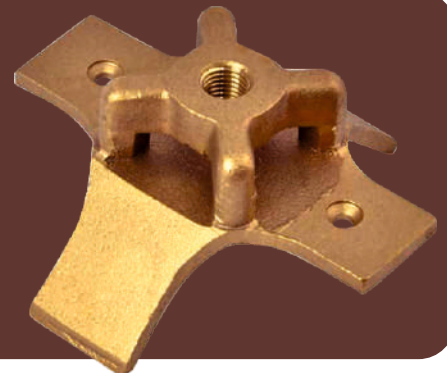


PLATE TYPE TEST CLAMP

THE CLAMP IS USED TO FORM A DISCONNECTING JOINT BETWEEN THE DOWN CONDUCTOR AND EARTHING SYSTEM. THERE ARE TWO WALL FIXING HOLES ON THE BOTTOM PLATE. FIX USING COUNTERSUNK

WOODSCREWS 1 1/2" X NO. 10 AND NO. 10 WALL PLUGS.

MATERIAL : COPPER ALLOY , ALUMINIUM



For Use With	Maximum Conductor Size (mm)
Copper Tape	26x15
Aluminium Tape	26x15

SCREW DOWN TEST CLAMP

THE SCREW DOWN TEST CLAMP ALLOWS EASY ACCESS TO COPPER CONDUCTORS WHERE FREQUENT INSPECTION AND TESTING MAY BE NECESSARY.

MATERIAL : COPPER ALLOY

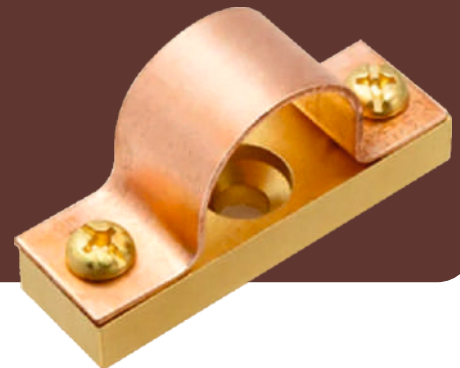


Maximum Conductor Size (mm)	D (mm)
26 x 8	61

METALLIC CONDUCTOR CLIPS

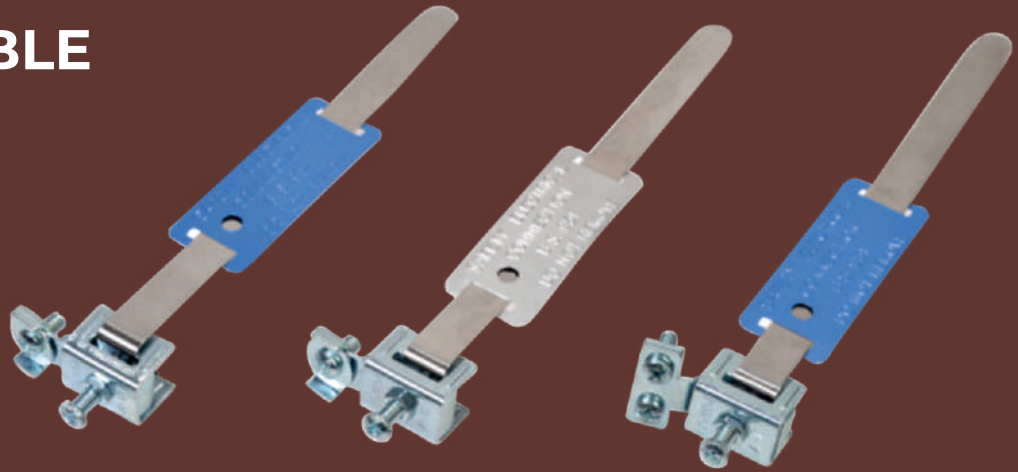
METALLIC CONDUCTOR CLIPS SECURE THE SOLID CIRCULAR CONDUCTOR TO THE BUILDING SURFACE. THE LARGER SIZES CAN ALSO BE USED TO SUPPORT THE 10MM AIR ROD RANGE.

MATERIAL : COPPER ALLOY , ALUMINIUM



For Use With	Maximum Conductor Size (mm)
Copper Tape	26x15
Aluminium Tape	26x15

ADJUSTABLE EARTH CLAMPS



We are experienced manufacturer, exporter and supplier of Sheet Metal Parts & Accessories. These are known for their best quality in market. The offered range is available with different specifications and can also be customized as per the precise needs of the clients. Various quality tests are also carried out which helps us to improve quality of the parts. The dimensions of this Parts are highly accurate to meet international standards.

We are a well-known entity in the arena of manufacturing high quality Metal Stamping Parts that are high on demand in the market. Our assortment of Metal Stamping Parts is widely demanded by the clients. Besides, the Metal Stamping Parts that we offer are known for their seamless finishing, dimensional accuracy.

RADIATOR EARTH CLAMPS



EARTH BLOCK

ROD SIZE: 4 WAY & 8 WAY
FINISH: NICKEL PLATED



HEAVY DUTY ACCESSORIES

B BOND

This Rupam Brand B Bonds Are Used For Bonding Aluminium And Copper Tapes To Flat Metal Surfaces.

MATERIAL:
HIGH COPPER ALLOY

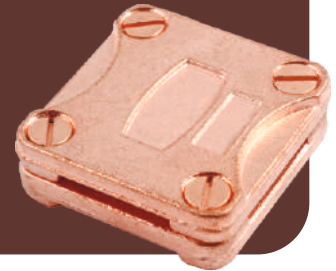
CONDUCTOR SIZE MM
25mm X 3mm



CROSS SADDLE

MATERIAL:
HIGH COPPER ALLOY

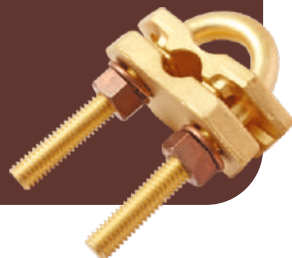
SIZE:
25MM X 3MM
50MM X 6MM



U BOLT CLAMP WITH DOUBLE PLATE (GU V TYPE)

MATERIAL: HIGH COPPER ALLOY
DOUBLE PLATE TYPE FOR VERTICAL STRANDED CABLES

SIZE: ROD DIA	TAPE WIDTH
16mm	25mm
25mm	25mm
31mm	25mm
38mm	25mm
50mm	25mm



U BOLT - ROD CLAMP (E TYPE)

This versatile range of Rupam 'U' bolt clamps can be used to connect flat tapes and stranded cables to earth rods, reinforcing bars, hand rails etc.

MATERIAL: HIGH COPPER ALLOY
SINGLE PLATE TYPE FOR HORIZONTAL FLAT TAPES

SIZE:
ROD DIA. TO CABLE DIA
5/8" x 16mm
3/4" x 20mm



OBLONG TEST CLAMP

Designed To Join A Range Of Tape Sizes In A Straight Through Position. In Many Applications The Clamp Enables Tapes To Be Overlapped And Secured By Two Set Screws.

MATERIAL:
HIGH COPPER ALLOY

MAXIMUM CONDUCTOR SIZE MM
26mm X 8mm / 33mm X 11mm / 51mm X 10mm



CABLE EARTH CLAMP

WIRE TO CONDUCTOR:
16MM² TO 25MM²

MATERIAL:
HIGH COPPER ALLOY



NOTE:

Above products are available as per customer's specification.