



Commitment of Quality



CHANNEL STRUT ACCESSORIES

COMMITMENT TOWARDS EXCELLENCE

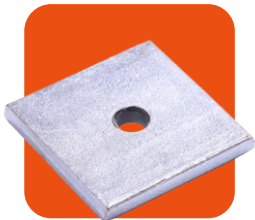
INDEX

CHANNEL STRUT ACCESSORIES

| | |
|--|----|
| SQUARE PLATE WASHER | 60 |
| RIGHT ANGLE BRACKET 1 + 1 HOLE | 60 |
| RIGHT ANGLE BRACKET 1 + 2 HOLE | 60 |
| RIGHT ANGLE BRACKET 2 + 2 HOLE | 60 |
| RIGHT ANGLE BRACKET 1 + 3 HOLE | 60 |
| SPLICE PLATE | 60 |
| FLAT L BRACKET | 60 |
| FLAT TEE BRACKET | 60 |
| CHANNEL JOINT | 61 |
| SINGLE GUSSET BRACKET | 61 |
| SHELF CHANNEL BRACKET 2 + 2 HOLE | 61 |
| BASE PLATE / SINGLE CHANNEL | 61 |
| WINDOW BRACKET / PICTURE FRAME BRACKET | 61 |
| CANTILEVER ARM | 61 |
| ANGLE BRACKET 2 HOLE + 2 HOLE | 61 |
| CONE POINT BOLTS | 61 |
| DELTA PLATE RIGHT ANGLE BRACKET 2 + 2 HOLE | 61 |
| THREADED ROD | 61 |
| PVC END CAP | 61 |

A wide range of channel brackets for use with 21mm and 42mm wide channel profiles to create frames and support.

Channel brackets are used to connect strut channel sections together in a variety of configurations, creating a multitude of different structures.



SQUARE PLATE WASHER

| SIZE | FINISH |
|------|--------------------|
| M6 | BZP, Hot-Dip Galv. |
| M8 | BZP, Hot-Dip Galv. |
| M10 | BZP, Hot-Dip Galv. |
| M12 | BZP, Hot-Dip Galv. |



**RIGHT ANGLE BRACKET
1 + 1 HOLE**

| SIZE | FINISH |
|-------------|---------------|
| 50mm x 48mm | Hot-Dip Galv. |



**RIGHT ANGLE BRACKET
1 + 2 HOLE**

| SIZE | FINISH |
|--------------|---------------|
| 57mm x 90mm | Hot-Dip Galv. |
| 41mm x 104mm | Hot-Dip Galv. |



**RIGHT ANGLE BRACKET
2 + 2 HOLE**

| SIZE | FINISH |
|--------------|---------------|
| 88mm x 100mm | Hot-Dip Galv. |



**RIGHT ANGLE BRACKET
1 + 3 HOLE**

| SIZE | FINISH |
|--------------|---------------|
| 56mm x 137mm | Hot-Dip Galv. |



SPLICE PLATE

| SIZE | FINISH |
|--------|---------------|
| 2 HOLE | Hot-Dip Galv. |
| 3 HOLE | Hot-Dip Galv. |
| 4 HOLE | Hot-Dip Galv. |



FLAT L BRACKET

| SIZE | FINISH |
|-------------|---------------|
| 80mm x 80mm | Hot-Dip Galv. |



FLAT TEE BRACKET

| SIZE | FINISH |
|--------------|---------------|
| 80mm x 120mm | Hot-Dip Galv. |



CHANNEL JOINT

| SIZE | FINISH |
|------|---------------|
| 41mm | Hot-Dip Galv. |



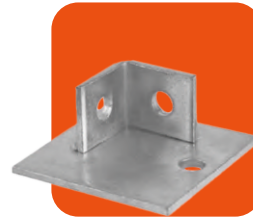
SINGLE GUSSET BRACKET

| FINISH |
|---------------|
| Hot-Dip Galv. |



SHELF CHANNEL BRACKET 2 + 2 HOLE

| SIZE | FINISH |
|--------------|---------------|
| 88mm x 100mm | Hot-Dip Galv. |



BASE PLATE / SINGLE CHANNEL

| SIZE | FINISH |
|---------------|---------------|
| 100mm x 100mm | Hot-Dip Galv. |



WINDOW BRACKET / PICTURE FRAME BRACKET

| SIZE | FINISH |
|-------------|---------------|
| 41mm x 41mm | Hot-Dip Galv. |
| 41mm x 21mm | Hot-Dip Galv. |



CANTILEVER ARM

| SIZE | FINISH |
|-------|---------------|
| 150mm | Hot-Dip Galv. |
| 300mm | Hot-Dip Galv. |
| 450mm | Hot-Dip Galv. |
| 600mm | Hot-Dip Galv. |
| 750mm | Hot-Dip Galv. |



ANGLE BRACKET 2 HOLE + 2 HOLE

| SIZE | FINISH |
|-----------|---------------|
| 45 degree | Hot-Dip Galv. |



CONE POINT BOLTS

| SIZE | FINISH |
|------------|---------------|
| M10 x 40mm | Hot-Dip Galv. |



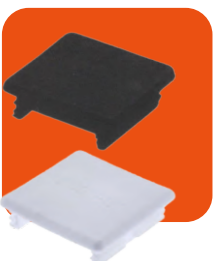
DELTA PLATE RIGHT ANGLE BRACKET 2 + 2 HOLE

| SIZE | FINISH |
|--------------|---------------|
| 90mm x 102mm | Hot-Dip Galv. |



THREADED ROD

| SIZE | LENGTH | FINISH |
|------|---------------|--------|
| M6 | UPTO 3 METERS | BZP |
| M8 | UPTO 3 METERS | BZP |
| M10 | UPTO 3 METERS | BZP |
| M12 | UPTO 3 METERS | BZP |



PVC END CAP

| SIZE | FINISH |
|-------------|--------------------|
| 41mm x 41mm | PVC (BLACK, WHITE) |